



**EKOLUKA KEY**

# SECTIONAL DOORS

INDUSTRIAL & GARAGE DOORS



A photograph of a modern building's exterior. The wall is composed of dark, horizontal rectangular panels. To the left, there is a vertical section of the wall. The ground in the foreground is paved with grey cobblestones. The sky is a uniform light grey.

# PRODUCT CATALOGUE

# TABLE OF CONTENTS

ABOUT US.....	4
INDUSTRIAL DOORS.....	6
COMPONENTS.....	9
GARAGE DOORS.....	10
COMPONENTS.....	12
TECHNICAL SPECIFICATIONS.....	14
TECHNICAL SPECIFICATIONS OF THE PANELS.....	14
TYPES OF DOOR GUIDANCE.....	17
TECHNICAL SPECIFICATIONS OF THE MOTORS.....	18
PEDESTRIAN DOORS AND WINDOWS.....	19
SUPPLEMENTARY COMPONENTS.....	20
CERTIFICATES.....	22



**EKOLUKA KEY**

SOLE REPRESENTATIVE OF  **isodoor** FOR THE TERRITORY OF THE REPUBLIC OF SERBIA

**EKOLUKA KEY D.O.O.** has been present on the market of the Republic of Serbia for over two decades, providing high-quality products and solutions in the fields of roller shutters, insect screens, PVC and aluminum joinery, as well as aluminum fences.

Since 2022, the product range has been expanded to include raw materials for the production of sectional doors, along with in-house manufacturing of industrial and garage doors.

The offer includes all essential components – from high-quality panels and mechanisms to advanced automation systems.

Through long-term cooperation with the I **ISODOOR**, EKOLUKA KEY delivers reliable and modern solutions for sectional doors in the Serbian market. Thanks to advanced technology and the precise craftsmanship of ISODOOR sandwich panels, we offer aesthetically adaptable and durable solutions for garage and industrial doors.

As the sole representative of ISODOOR, EKOLUKA KEY guarantees reliability, functionality, and high-quality materials for the production of sectional doors.



#### PRODUCTION

PRODUCTION OF READY-TO-INSTALL INDUSTRIAL AND GARAGE DOORS



#### RAW MATERIAL

SALE OF RAW MATERIALS FOR THE PRODUCTION OF INDUSTRIAL AND GARAGE DOORS



#### FREE DELIVERY

DELIVERY OF FINISHED PRODUCTS TO YOUR ADDRESS



#### CERTIFIED PRODUCT

CERTIFIED PRODUCT BY  
*RISE Research Institutes of Sweden AB*;  
MEETS ALL RELEVANT ISO STANDARDS



 EKOLUKA KEY

 isodoor

INDUSTRIAL DOORS

# INDUSTRIAL DOORS

5

YEAR  
WARRANTY ON  
PANELS



## HIGH-QUALITY MATERIALS

What sets our doors apart on the market is the quality of the materials used in their production. They are made from ISODOOR sandwich panels, 40 mm thick, which not only ensure long-lasting durability but also provide excellent insulation. At the top of each panel is a sealing rubber strip that ensures tight sealing between panels, preventing the entry of dust, air, and rainwater.

Thanks to the high polyurethane content injected under high pressure between the steel sheet layers, the industrial doors are resistant to harsh weather conditions, open flames, and direct impacts.

In addition to all these features, it is important to note that the sandwich panels come with a five-year warranty.

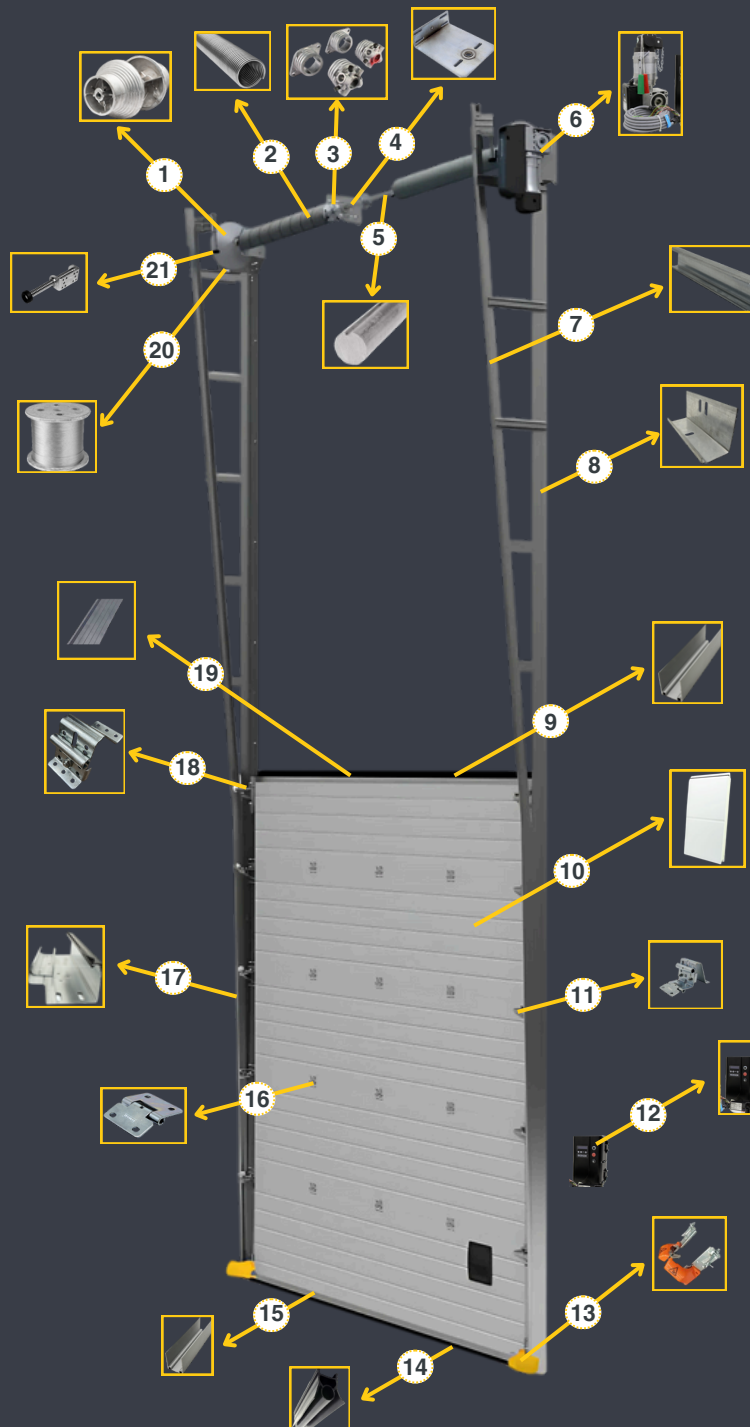


## MODULAR STRUCTURE

Industrial doors can be adapted to various openings and requirements.


Different lifting options are available depending on the height and size of the opening. Standard lift is suitable for larger buildings, vertical lift is ideal for spaces with lower ceilings, while full vertical lift provides fast opening. Design tailored to your taste. EKOLUKA offers a wide range of panel colors and designs. In addition to the classic white design (RAL 9010), you can choose from our selection to easily match your space.

# COMPONENTS



- 1 PULLEY
- 2 SPRING
- 3 SPRING CAP
- 4 SHAFT BRACKET
- 5 SHAFT
- 6 INDUSTRIAL MOTOR
- 7 C PROFILE
- 8 VERTICAL L PROFILE
- 9 START-FINISH PROFILE FOR DOORS
- 10 PANEL
- 11 SIDE HINGE
- 12 CONTROL UNIT
- 13 SAFETY BRAKE
- 14 BOTTOM RUBBER FOR INDUSTRIAL DOORS
- 15 START-FINISH PROFILE FOR DOORS
- 16 MIDDLE HINGE
- 17 VERTICAL TRACK
- 18 TOP RUBBER
- 19 STARTING HINGE
- 20 CABLE
- 21 BUMPER

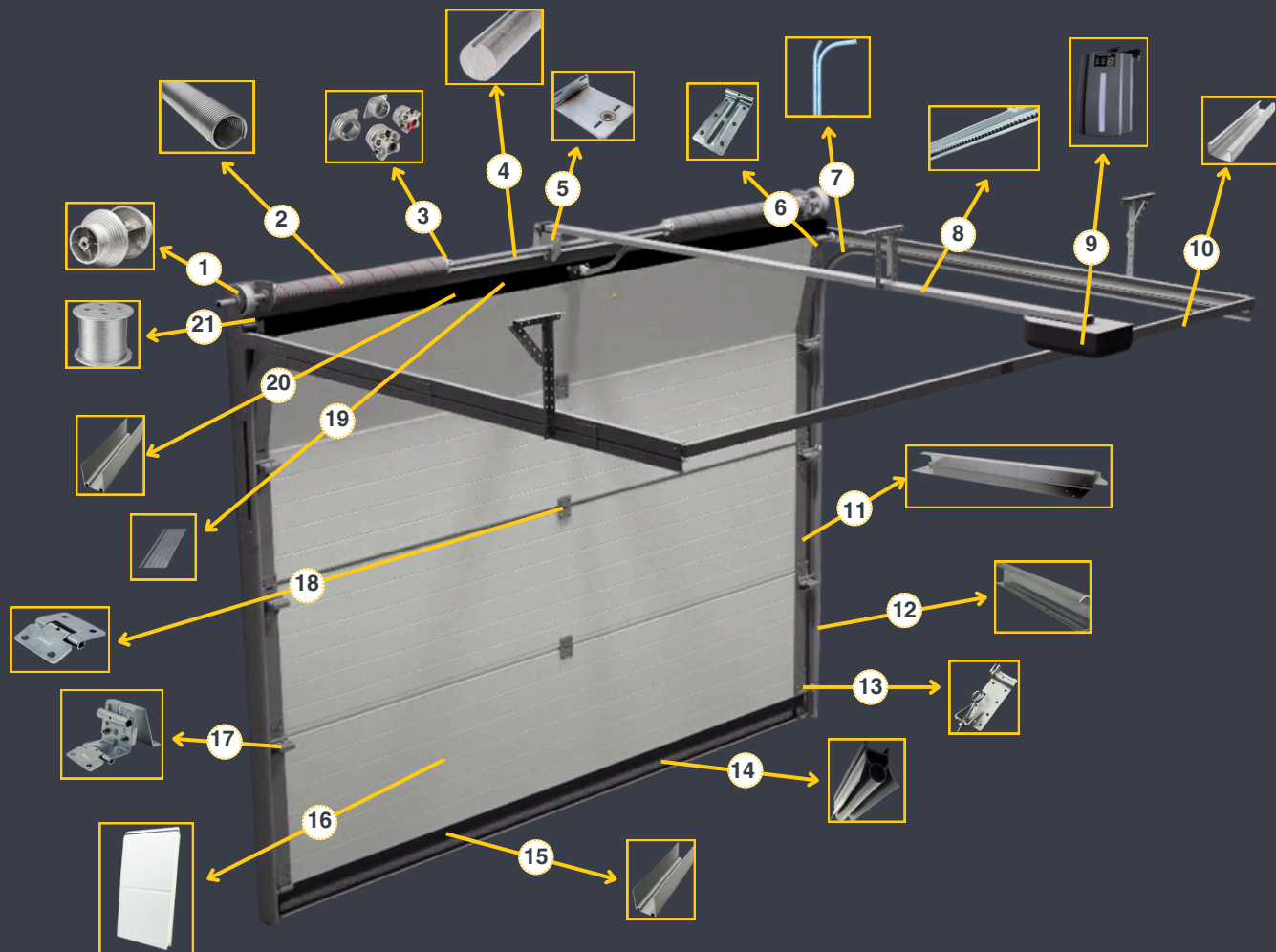


 EKOLUKA KEY

 isodoor

GARAGE DOORS

# COMPONENTS



- |   |  |                                   |
|---|--|-----------------------------------|
| 1 PULLEY                                  | 8 MOTOR RAIL                           | 15 START-FINISH PROFILE FOR DOORS |
| 2 SPRING                                  | 9 CEILING MOTOR                        | 16 PANEL                          |
| 3 SPRING CAP                              | 10 C PROFILE                           | 17 SIDE HINGE                     |
| 4 SHAFT                                   | 11 PANEL COVER                         | 18 CENTER HINGE                   |
| 5 SHAFT HOLDER                            | 12 VERTICAL TRACK                      | 19 TOP SEAL                       |
| 6 BOTTOM HINGE FOR GARAGE DOORS           | 13 ADJUSTABLE HINGE                    | 20 START-FINISH PROFILE FOR DOORS |
| 7 HORIZONTAL RAIL FOR DOUBLE GUIDE SYSTEM | 14 BOTTOM RUBBER SEAL FOR GARAGE DOORS | 21 CABLE                          |

# GARAGE DOOR



## DURABILITY AND LOW MAINTENANCE COSTS

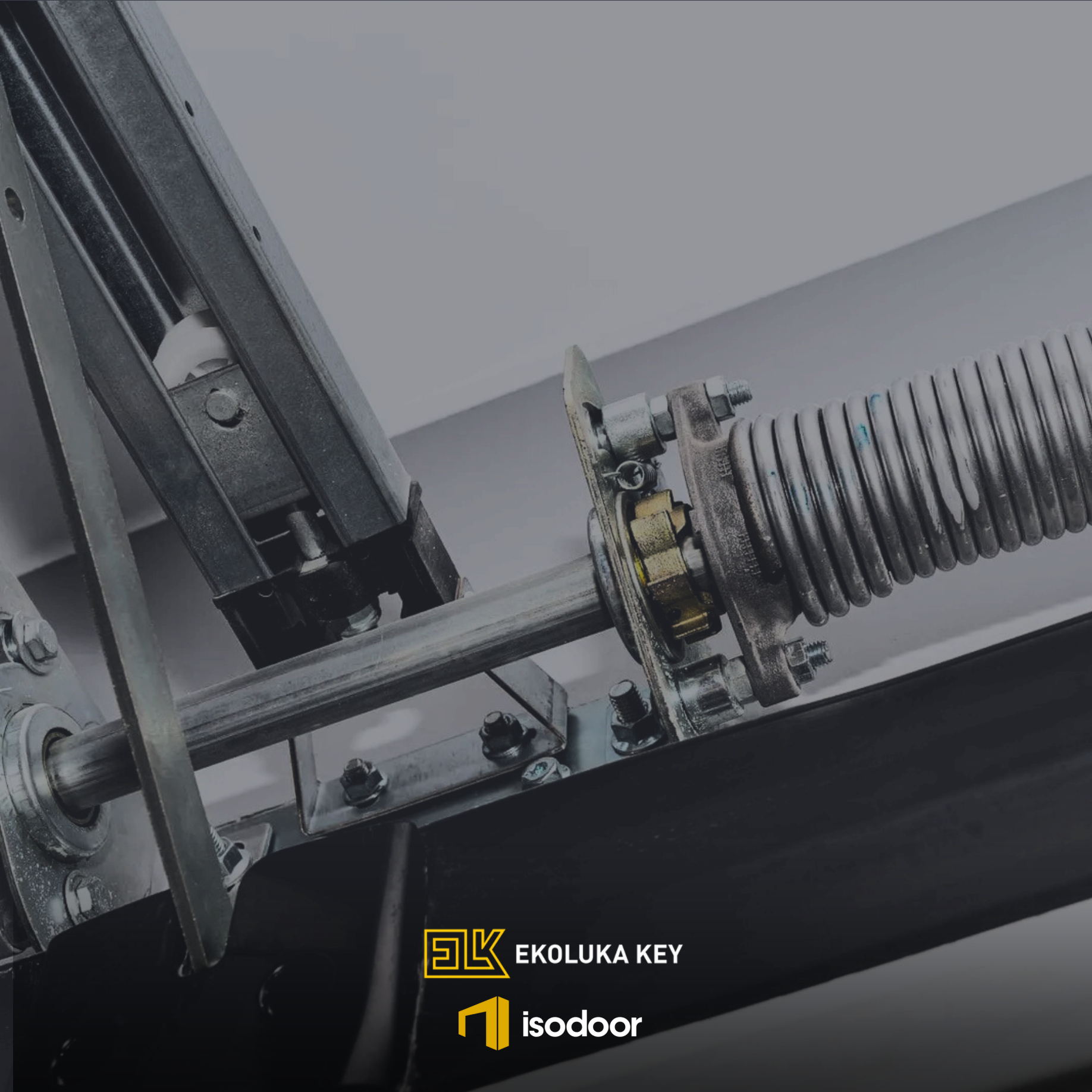


Our garage doors are made from high-quality materials that are resistant to wear and weather conditions. This means you will enjoy a long-lasting and reliable solution with minimal maintenance costs. Thanks to precise craftsmanship and top-quality finishes, these doors guarantee high functionality and aesthetics that easily blend into any space. Additionally, their mechanism ensures quiet and reliable operation, making them the ideal choice for residential buildings.

## SAFETY AND SECURITY



Safety is always a priority when it comes to both private and commercial spaces. Sectional garage doors are designed to provide maximum protection, combining a robust construction with modern safety technologies. They are equipped with a range of safety features, including obstacle detection sensors and automatic shutoff in case of contact with anything beneath the door, preventing accidents and damage.



# TECHNICAL SPECIFICATIONS

# TECHNICAL SPECIFICATIONS OF THE PANELS

**DIMENSIONS:** The panels are made in heights of 500 mm and 610 mm.

**THICKNESS:** The total thickness of the panel is 40 mm, consisting of two layers of galvanized steel sheet with a thickness of 0.5 mm, between which high-density polyurethane (CFC-free) is injected.

**INSULATION:** The panels are designed to provide high insulation thanks to the foam injected between the steel layers.

**WEIGHT:** The weight of the panels is 11 kg/m<sup>2</sup>, allowing for easy handling and installation.

**FINGER SAFETY:** Our panels are equipped with a finger-safety protection system, ensuring safety when handling the doors.

**CERTIFICATIONS AND TESTING:** ISODOOR panels are subjected to rigorous testing in Europe according to the ISO EN 13241-1 standard, and all certificates and test reports are available.

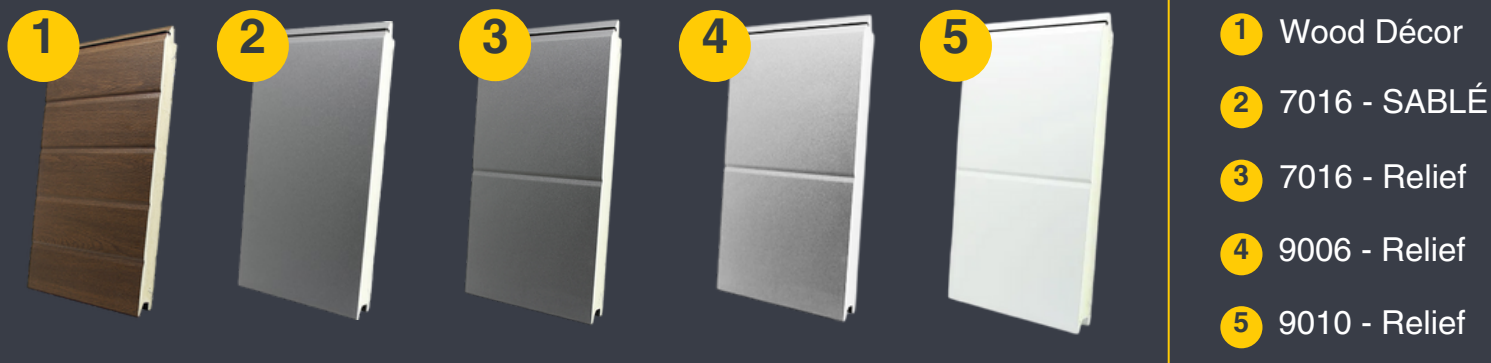
**THERMAL TRANSFER COEFFICIENT:** The thermal transfer coefficient is 0.5 W/m<sup>2</sup>K, providing excellent energy efficiency.

**THERMAL TRANSMITTANCE:** Doors made from ISODOOR panels have a thermal transmittance of 1.4 W/m<sup>2</sup>K, making your space comfortable and energy-efficient.

**WEATHER RESISTANCE:** The panels are resistant to wind load according to the EN 12424 standard, rated as Class 3, and water penetration resistance according to the EN 12425 standard, also rated as Class 3.

**AIR PERMEABILITY:** According to the EN 12426 standard, the panels are rated as Class 2 for air permeability.

**SEALING RUBBER:** A synthetic rubber EPDM sealing gasket is placed between the panels, providing additional protection and insulation.

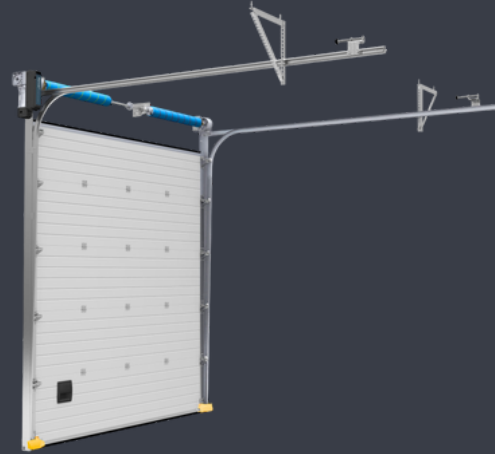


# TYPES OF DOOR GUIDANCE



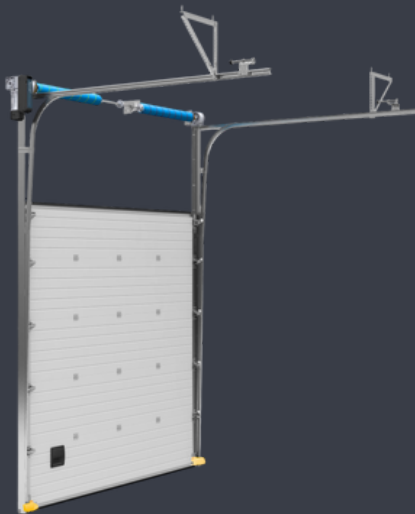
## DOUBLE GUIDANCE

DOUBLE GUIDANCE IS USED IN SITUATIONS WHERE THE CLEAR OPENING HEIGHT IS BETWEEN 200MM AND 400MM.



## SINGLE GUIDANCE

SINGLE GUIDANCE IS USED IN SITUATIONS WHERE THE CLEAR OPENING HEIGHT IS BETWEEN 400MM AND 600MM.



## RAISED GUIDANCE

RAISED GUIDANCE IS USED IN SITUATIONS WHERE THE CLEAR OPENING HEIGHT IS BETWEEN 700MM AND 4200MM



## VERTICAL GUIDANCE

VERTICAL GUIDANCE IS USED IN SITUATIONS WHERE THE CLEAR OPENING HEIGHT EQUALS THE DOOR HEIGHT + 350MM.

# TECHNICAL SPECIFICATIONS OF THE MOTORS

## GARAGE MOTOR



2

YEARS OF  
WARRANTY ON  
MOTORS

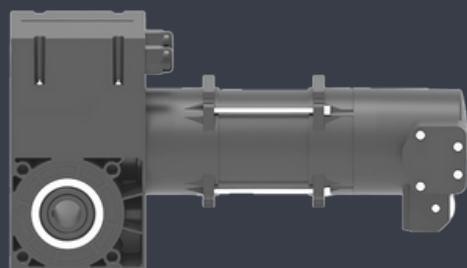
Ceiling motors are ideal for garage doors with a height of up to 3.5 meters and a width between 4.5 and 5 meters.

They are equipped with a soft start-stop system and an automatic return-to-original-position function in case of obstacle detection, ensuring safe and reliable operation.

The drive rails are available in lengths of 3.5, 4.2, and 5.2 meters, adapted to different garage door dimensions.

Our motors can also be installed with software that allows control via a mobile app, providing added comfort and remote control.

POWER	SURFACE
800N	10m <sup>2</sup>
1200N	18m <sup>2</sup>



## INDUSTRIAL MOTOR

Industrial motors are designed for lifting doors with large width and height.

They are mounted laterally on the door shaft, requiring minimal installation space (only 25cm). These motors are equipped with a chain for manual lifting in case of power failure, as well as a soft start/stop system. While intended for industrial doors, they can also be used for garage doors if the conditions allow.

POWER	SURFACE
70N	25m <sup>2</sup>
100N	35m <sup>2</sup>

# PEDESTRIAN DOORS AND WINDOWS



In order to improve functionality, **pedestrian doors** can be installed in sectional doors. This enhances the functionality and longevity of the doors, as they do not need to be lifted to allow unobstructed movement of people. The dimensions of pedestrian doors vary and depend on the construction itself, panel sizes, and customer requirements.

- Pedestrian door sets come in two profile colors:
- ELOX
  - BLACK

Pedestrian doors always open outward.

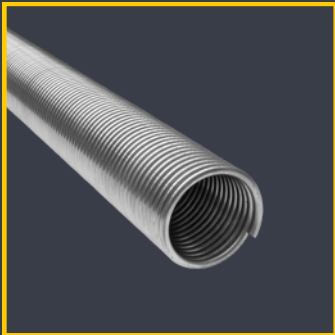
**Windows** can also be installed in sectional doors. This increases the lighting in the space and allows natural light to enter, while maintaining the strength and insulation properties of the door.

The dimensions of the available windows in our offer, as well as their colors, are listed in the table below.

COLOR	SIZE
black	640x336mm; 532x344mm
white	532x344mm



# SUPPLEMENTARY COMPONENTS



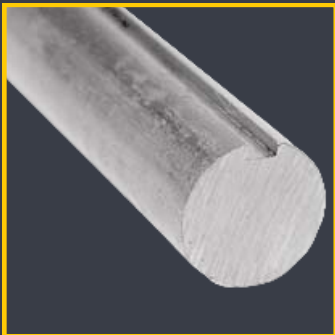
SPRING

SPRING DIMENSIONS				
AxBmm (A = wire thickness; B = Ø spring)	6x67mm	7x95mm	9x95mm	9.5x152mm
5.5x50mm	6.5x67mm	7.5x95mm	9.5x95mm	10x152mm
6x50mm	7x67mm	8x95mm	8.5x152mm	10.5x152mm
6.5x50mm	7.5x67mm	8.5x95mm	9x152mm	11.5x152mm



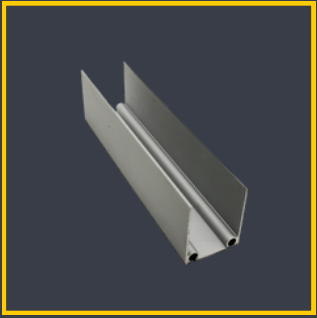
PULLEY

TYPES OF PULLEYS				
PULLEY	NL8	NL12	NL18	HL54
max. door height	2490mm	3680mm	5881mm	4800mm +1300mm
PULLEY	HL120	HL164	VL11	VL18
max. door height	5020mm +3000mm	6000mm +4200mm	3300mm	6000mm

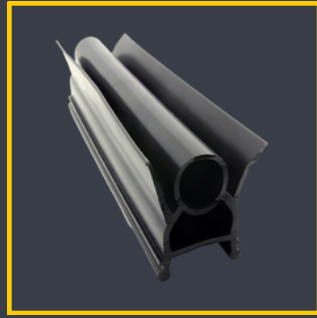


SHAFT

TYPES OF SHAFTS	
HOLLOW SHAFT	SOLID SHAFT
HOLLOW SHAFT IS USED IN CASES WHEN THE MAXIMUM DIMENSIONS OF THE DOOR ARE: width: 5000mm; height: 4000mm	SOLID SHAFT IS USED IN CASES WHEN THE HEIGHT OF THE DOOR EXCEEDS 4000MM



START-FINISH PROFILE



BOTTOM SEAL



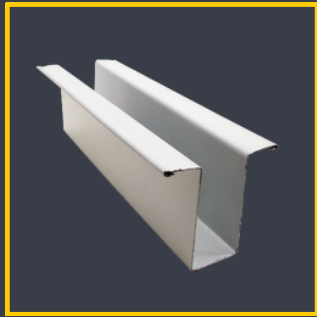
SAFETY BRAKE



STARTING HINGE



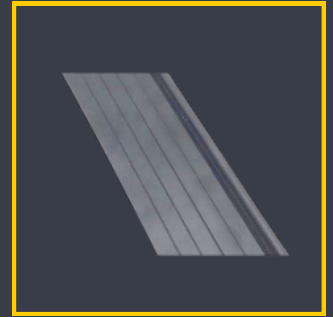
COVER PLATE



OMEGA



PEDESTRIAN DOOR SET



TOP SEAL



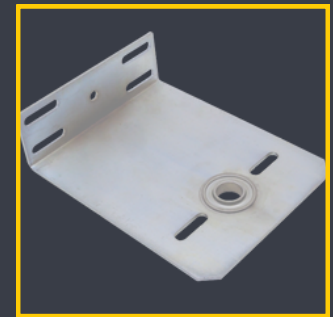
MANUAL LIFTING CHAIN



BUMPER



SPRING CAP



SHAFT HOLDER

CERTIFICATES

# Determination of air permeability, resistance to water penetration and resistance to wind load according to EN 13241:2003+A2:2016

(1 appendix)

## Test object

Client: BILKA otomatik kapı sistemleri - ISODOOR  
Product name: Industrial Door, ISO-E  
Type of door: Overhead, sectional door  
Daylight size: Width 4000 mm, Height 3380 mm

## Summary of classification

Air permeability according to EN 12426:2000:  
Resistance to water penetration according to EN 12425:2000:  
Resistance to wind load according to EN 12424:2000:

## Test procedure

### Air permeability

A positive air pressure was established in the chamber and the air leakage was measured at 50 Pa.

The tests were carried out in accordance with EN 12426:2000.

**Resistance to water penetration**  
Water was applied through the upper row supplied with 2±0.2 l/s of water per nozzle.

The test was carried out in accordance with EN 12425:2000.

**Resistance to wind load**  
The door was tested in a wind tunnel. The air pressure in the chamber was increased according to EN 12424:2000.

The test was carried out in accordance with EN 12424:2000.

RISE Research Institute of Sweden

Postal address  
Box 817  
SE-501 12 BORÅS  
Sweden

BILKA otomatik kapı sistemleri  
Mimarsinan OSB 9, Caddesi No:1  
TR-38520 MELİKGAZI/KAYSERİ  
Türkiye

Class 2  
Class 3, 110 Pa  
Class 3

# Determination of air permeability, resistance to water penetration and resistance to wind load according to EN 13241:2003+A2:2016

(1 appendix)

## Test object

Client: BILKA otomatik kapı sistemleri - ISODOOR  
Product name: Garage Door, ISO 220  
Type of door: Overhead, sectional door  
Daylight size: Width 2500 mm, Height 2250 mm

The door was supplied and installed by the client in the opening of an airtight chamber, with its exterior facing inwards towards the chamber, see description and figures in appendix 1.

EN 12426:2000:  
according to EN 12425:2000:  
EN 12424:2000:

Class 3  
Class 3, 110 Pa  
Class 5, 1300 Pa

EN 12427:2000:  
The door was tested in a wind tunnel. The air pressure in the test chamber was increased according to EN 12424:2000.

EN 12489:2000:  
The door was tested in a wind tunnel. The air pressure in the test chamber was increased according to EN 12424:2000.

EN 12444:2000:  
The door was tested in a wind tunnel. The air pressure in the test chamber was increased according to EN 12424:2000.

This report may not be reproduced other than in full, except with the prior written approval of the issuing laboratory.



## Manufacturer's Declaration EU Declaration of Conformity

Our Company,  
**BILKA OTOMATİK KAPI SİSTEMLERİ  
LOJ. İNŞ. SAN. ve TİC. LTD. ŞTİ.**  
Continues its production activities at the following address  
Mimarsinan O.S.B 9. Caddesi No:1 Melikgazi / KAYSERİ / TURKEY

The accredited testing agency 0402,  
Swedish SP National Testing and Research Entity  
ITTR-Core Type Test Reports with reference number 9P02246-1 date of 30 / 4 / 2019  
Based on the registered ISODOOR brand

## SECTIONAL INDUSTRIAL DOORS,

ISO EN 13241-1 : 2003 + A2:2016 within the scope of the standard ;  
EN 12426 , EN 12425 , EN 12424 , EN 12427 , EN 12 489 , EN 12444,  
EN 12667 , EN 10077-2 .

" EU Construction Products Directive 89/106/EEC " to control building materials,  
" EC Directive 2004/108/EC " electromagnetic compatibility regulation,  
" EU Directive 2006/42/EC " machine direction

We declare that it is produced in accordance with all regulations.

KAYSERİ / TURKEY

3 / 2 / 2020



Emrullah KAYA  
Genel Müdür







# EKOLUKA KEY

Reliable partner for mutual success



+381 62 288 901



info@ekoluka.rs



www.ekoluka.rs



Kneza Mihaila 278, 34000 Kragujevac